

Return to School Update

Parent Live Event 03 09 2020

Main Principles – These have not changed much

Prevention:

- 1) minimise contact with individuals who are unwell by ensuring that those who have coronavirus (COVID-19) symptoms, or who have someone in their household who does, do not attend school
- 2) clean hands thoroughly more often than usual
- 3) ensure good respiratory hygiene by promoting the 'catch it, bin it, kill it' approach
- 4) introduce enhanced cleaning, including cleaning frequently touched surfaces often, using standard products such as detergents and bleach
- 5) minimise contact between individuals and maintain social distancing wherever possible
- 6) where necessary, wear appropriate personal protective equipment (PPE)

Response to any infection:

- 7) engage with the NHS Test and Trace process
- 8) manage confirmed cases of coronavirus (COVID-19) amongst the school community
- 9) contain any outbreak by following local health protection team advice

Reducing Risk of contracting COVID-19 Students

- **We must try not to bring Covid-19 into the building**
- Any pupil with symptoms of Covid-19 should not attend school for 10 days and is expected to undertake a test under the NHS Test and Trace programme. The pupil/parents are instructed to notify the school immediately that they are self-isolating and if a positive result is obtained.
- To support the testing process, the school have been provided with a supply of home testing kits. (Minimal Supply)
- Where a positive result is obtained, the school will contact the local Health Protection Team for advice on any further action required. Where the advice is for other students to self-isolate students and parents will be given full advice.
- A negative result means the pupil can return to school if they no longer have symptoms similar to COVID-19 or if they are no longer unwell.
- Where a pupil or parent indicates an individual in their household is unwell with symptoms compatible with Covid-19, they must self-isolate for up to 14 days. Under the Test and Trace programme there is an expectation that their symptomatic household member is tested. If this test result is negative the pupil can return to school if they do not have any COVID-19 related symptoms.
- Systems will be in place to track student self-isolation with attendance team notifying student services and pastoral to ensure follow up happens effectively.
- Every student is expected back in school, if there are any serious medical reasons for non-attendance please contact the attendance team.

Symptoms

- high temperature – this means you feel hot to touch on your chest or back.
- a new, continuous cough – this means coughing a lot for more than an hour, or 3 or more coughing episodes in 24 hours.
- anosmia - loss or change to your sense of smell or taste – this means you've noticed you cannot smell or taste anything, or things smell or taste different to normal.

We are aware some students will have conditions which means they are more likely to cough. Please make sure that all medical details are updated on Operoo (Formerly CareMonkey)

What do these mean in practice?

Social Distancing

- 2 Metres wherever possible between staff and staff
- 2 metres wherever possible between staff and students
- 2 Metres when students are in different bubbles (Year Groups)
- The school will record Close Contact occurrences for test and trace.
 - direct close contacts - face to face contact with an infected individual for any length of time, within 1 metre, including being coughed on, a face to face conversation, or unprotected physical contact (skin-to-skin)
 - proximity contacts - extended close contact (within 1 to 2 metres for more than 15 minutes) with an infected individual
 - travelling in a small vehicle, like a car, with an infected person
- School is loosely zoned into year group bubbles
- Older children (KS4 and KS5) encouraged to keep distance in their groups where possible. There is a no touching policy as part of behaviour systems
- Classrooms and other spaces redesigned to support social distancing.
- Walking past students and staff in corridors or large spaces is considered low risk.

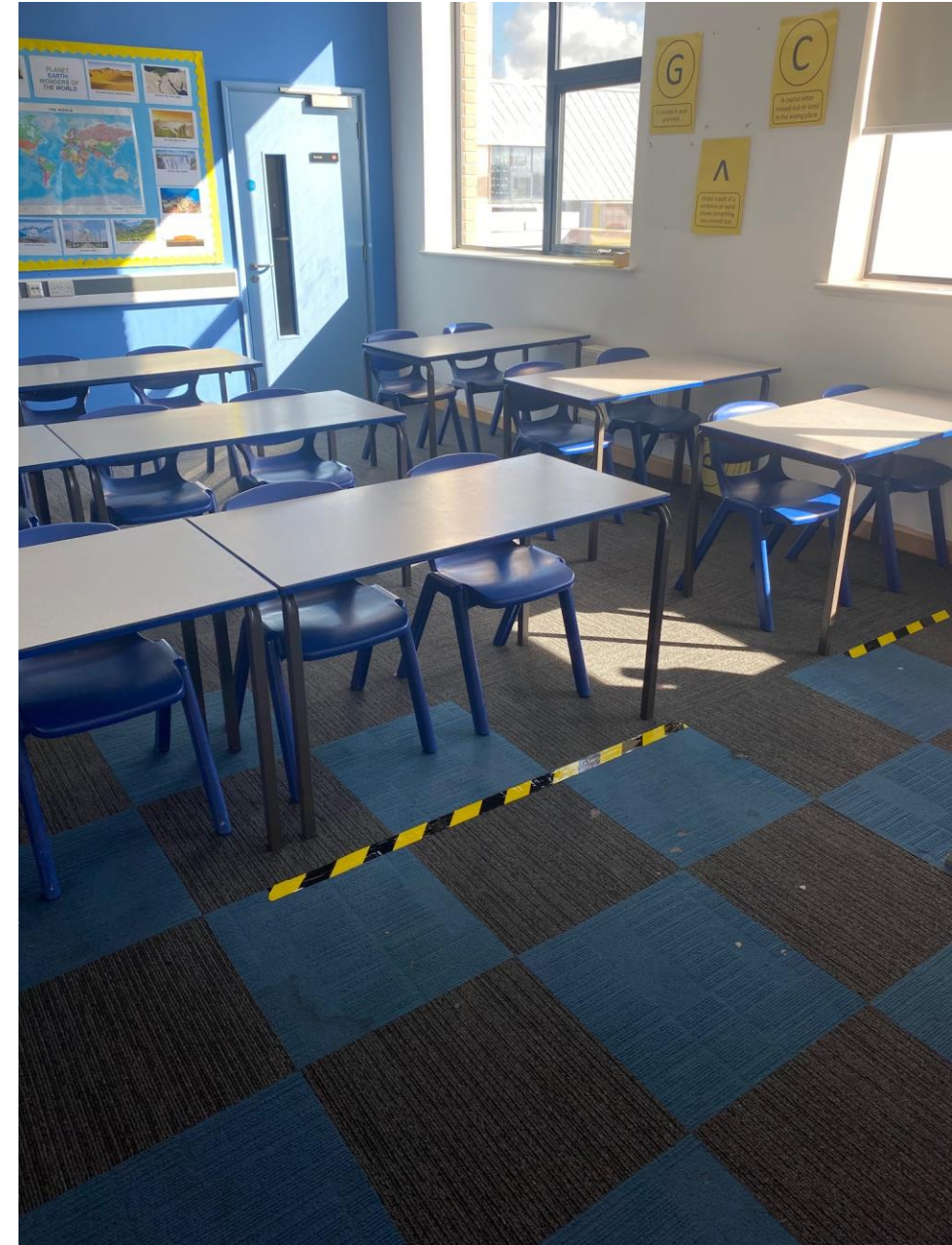


Social Distancing – Classrooms

- Barrier Tape – Along Front of classroom signifies to students and staff
- 2 Metres from Staff workstation
- 2 Metres from teaching space by IWB
- Extends across front of room to allow Teaching Assistants to work with students
- Where there was scope to have more distance in rooms we used it
- All student desks face forwards

Rooms have had any non-required furniture removed

Students will spend much of their time in one classroom, except for modern languages, PE and all options subjects in KS4 and KS5



Hygiene Requirements – Hands/Cleaning/ respiratory

- All staff, students and visitors to wash hands on arrival and we are all responsible for our own hand hygiene during the day.
- Students will be encouraged to ensure good hand hygiene do this at other key points in the day
- Have tissues available if you need them and dispose of them in bins
- All toilets are on high frequency clean however students can use wipes available if they have any worries about using toilets.
- Anti-bac dispensers, and sets of wipes for students and staff in every classroom. (Please bring small personal anti-bac sanitiser as per new equipment list)
- Rooms will be cleaned in-between different year group bubbles
- Students may occasionally have to use a wipe down their IT or PE equipment before use and will be supported by staff with this.

Face Masks/ Coverings

- Suitable face masks must be worn by all students, staff and visitors while in transit in the corridors, staircases and lifts around the academy. (Unless a valid medical exemption applies) Wearing of masks will not be required in classrooms, large communal areas used by single bubbles, outside areas of the school and on the way into and out of school site.
- We do not feel the use of masks in these areas is required but as per our original position on the wearing of masks/face coverings staff and students can wear suitable masks if they choose to. The uniform policy has been updated to reflect this.

Yes - Corridors / Lifts / Staircases
/Students while moving through a
different bubble area

No - Classrooms, Outside,
Communal Areas,

Face Masks/ Coverings

- Safe and effective use of masks/ face coverings will form part of the student induction process and the mentor programme
- If a mask or covering breaks during the day we can provide spares through student services
- We will have supplies of spares but we need to keep distribution of these to a minimum so please remind your child to bring their mask
- We will continue to review the position on masks within the risk assessment over the next few months following national guidance and local/national transmission rates

Transit Routes

- Keep Left – Centre Line in place with arrows
- Inner Stairs – Remain One way zones Wells side Up
Kipling side Down
- Ginger Rogers – Now 2 way stairs
- End Stairwells & Sixth Form – Give Way zones



Give Way Zone
Wait Till your
exit is clear –
Keep Left

- Year 7 & 8 Mostly Use the end Stairwells to move between break and classroom spaces
- Year 9 Use end stairwells start of the day and inner ones at break & lunch times
- Year 10, 11 Sixth Form use inner stairwells

Health & Safety Processes

- Risk Assessment Version 10 – Will be published by the weekend on academy website for parents.
- We have 25 sub risk assessments that individual teams and departments also work through to ensure the safe running of the school and all its activities.
- Both Catering outlets are setup for food to be cooked and served safely, students will receive new cards to replace the fingerprint readers on their first day.
- We are still restricting most visitors to the academy site and will need to keep full records for 21 days. Most parental meetings will still be virtual. Please wait for your child a distance away from the gates if collecting in person .

The New School Day

	Assemble	p1 (60 min) 8.30am	p2 9.30am - 10.50am (80min total) 60min lesson and 20min break				p3 (60 min)	P4 Mentor 20 mins	p5 (90 mins) includes lunch			p6 (60 min lessons)	p7 (60 min lesson)
	8.20am	8.30am	9.30am	10am	10.30am	10.50am	11.50am	12.10am	12.40am	13.10am	13.40pm	End time various	
Y7	New Build	60 min lesson	30 mins lesson	break (NB)	30 mins lesson	60 min lesson	Mentor	30 mins lesson	lunch (NB)	30 min lesson	60 min lesson	14.35pm	
Y8	Sports Hall	60 min lesson	break (NB)	60 min lesson		60 min lesson	Mentor	Lunch (NB)	60 min lesson		60 min lesson	14.35pm	
Y9	Red Seats	60 min lesson	30 min lesson	break (AT)	30 mins lesson	60 min lesson	Mentor	30 mins lesson	lunch (AT)	30 min lesson	60 min lesson	14.40pm	
Y10	Main Hall	60 min lesson	break (AT)	60 min lesson		60 min lesson	Mentor	Lunch (AT)	60 min lesson		60 min lesson	14.45pm	
Y11	Atrium	60 min lesson	60 min lesson		break (AT)	60 min lesson	Mentor	60 min lesson		Lunch (AT)	60 min lesson	14.45pm	
Y12	Library	60 min lesson	60 min lesson		break (NB)	60 min lesson	Mentor	60 min lesson		Lunch (NB)	60 min lesson	14.45pm	
Y13	6th Form CR	60 min lesson	60 mins lesson		break (NB)	60 min lesson	Mentor	60 min lesson		Lunch (NB)	60 min lesson	14.45pm	

New protocols

- Students can arrive from 8am via either entrance. They should all arrive by 8.20am
- They will be shown to their assembling area by duty staff
- Students in years 7 to 10 will be escorted to P1 by their teachers and to the door of the school at the end of the day.
- Students need to leave promptly each afternoon
- We will restart clubs, fixtures and after school events later this half term.
- Staggered End times from 2.35pm to 2.45pm

New protocols

- New Equipment List
- New Behaviour Policy
- New Uniform Policy

Student Entry Points Year 7

- Hand Wash Location – Doyle Gardens and New Build
- Morning Assemble Location – New Build
- Breaks & Lunch Inside Space – New Build
- Breaks and Lunch Outside Space – All School Gardens
Wells/Kipling/Doyle



End Of School Time 2.35pm



Year 8

- Hand Wash Location – Amphitheatre
- Morning Assemble Location – Sports Hall (Enter Via Amphitheatre doors)
- Breaks & Lunch Inside Space – New Build
- Breaks and Lunch Outside Space – All School Gardens
Wells/Kipling/Doyle

End Of School Time 2.35pm



Year 9

- Hand Wash Location – Front of School (Under Dance Studio)
- Morning Assemble Location – Red Seats (Enter Via PE side doors)
- Breaks & Lunch Inside Space – Atrium
- Breaks and Lunch Outside Space – Amphitheatre/MUGAs



End Of School Time 2.40pm



Year 10

- Hand Wash Location – Front of School (Left Hand Sinks by Reception)
- Morning Assemble Location – Main Hall (Enter Via Back of main hall)
- Breaks & Lunch Inside Space – Atrium
- Breaks and Lunch Outside Space – Amphitheatre/MUGAs



End Of School Time 2.45pm



Year 11

- Hand Wash Location – Amphitheatre (Sinks by main student entrance)
- Morning Assemble Location – Atrium(Enter via main student entrance)
- Breaks & Lunch Inside Space – Atrium
- Breaks and Lunch Outside Space – Amphitheatre/MUGAs



End Of School Time 2.45pm



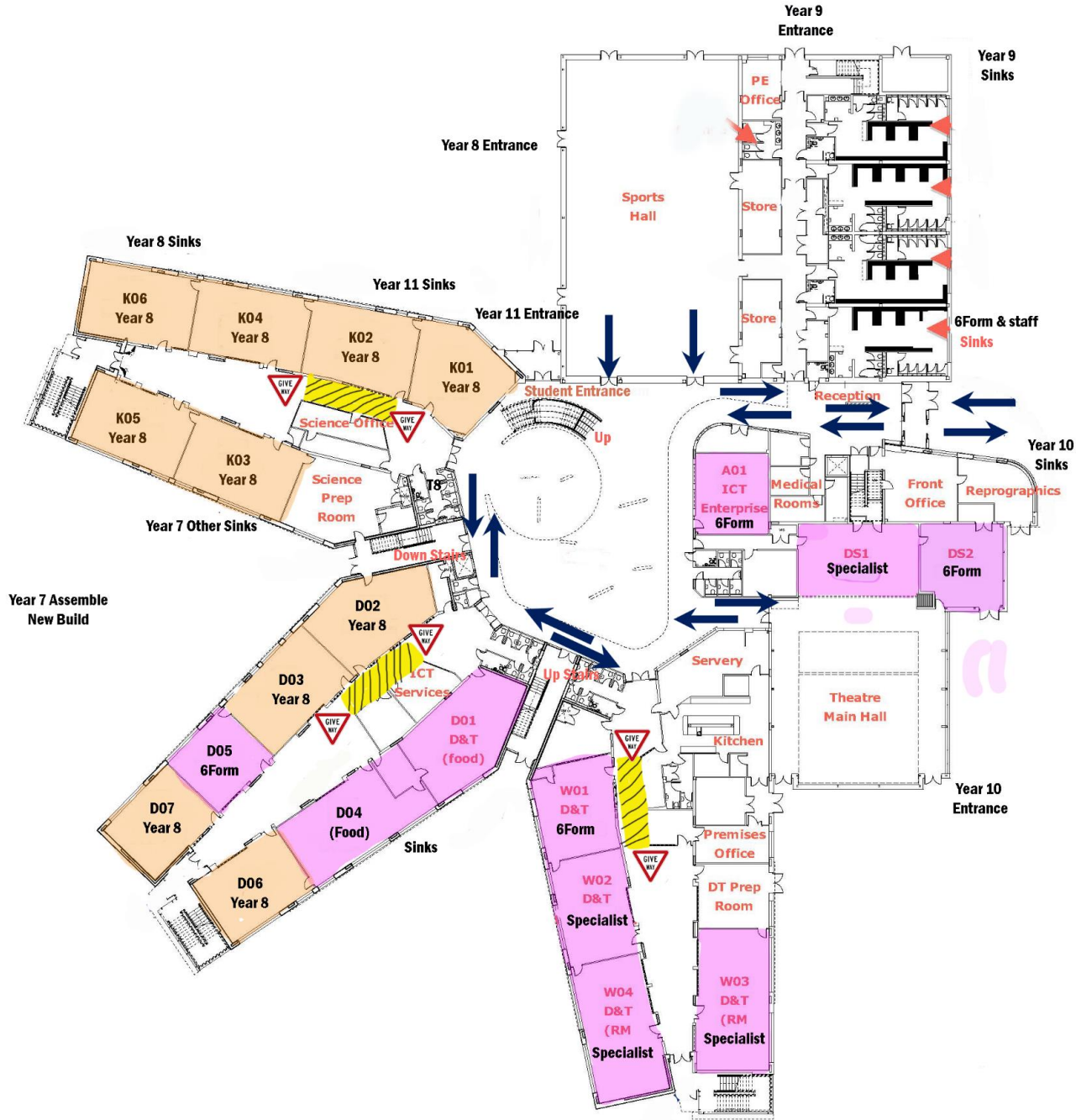
Sixth Form

- Hand Wash Location – Front of School (Right Hand sinks by reception)
- Morning Assemble Location – Sixth form Areas (Enter via reception)
- Breaks & Lunch Inside Space – New Build
- Breaks and Lunch Outside Space – School Gardens and Sixth form Garden

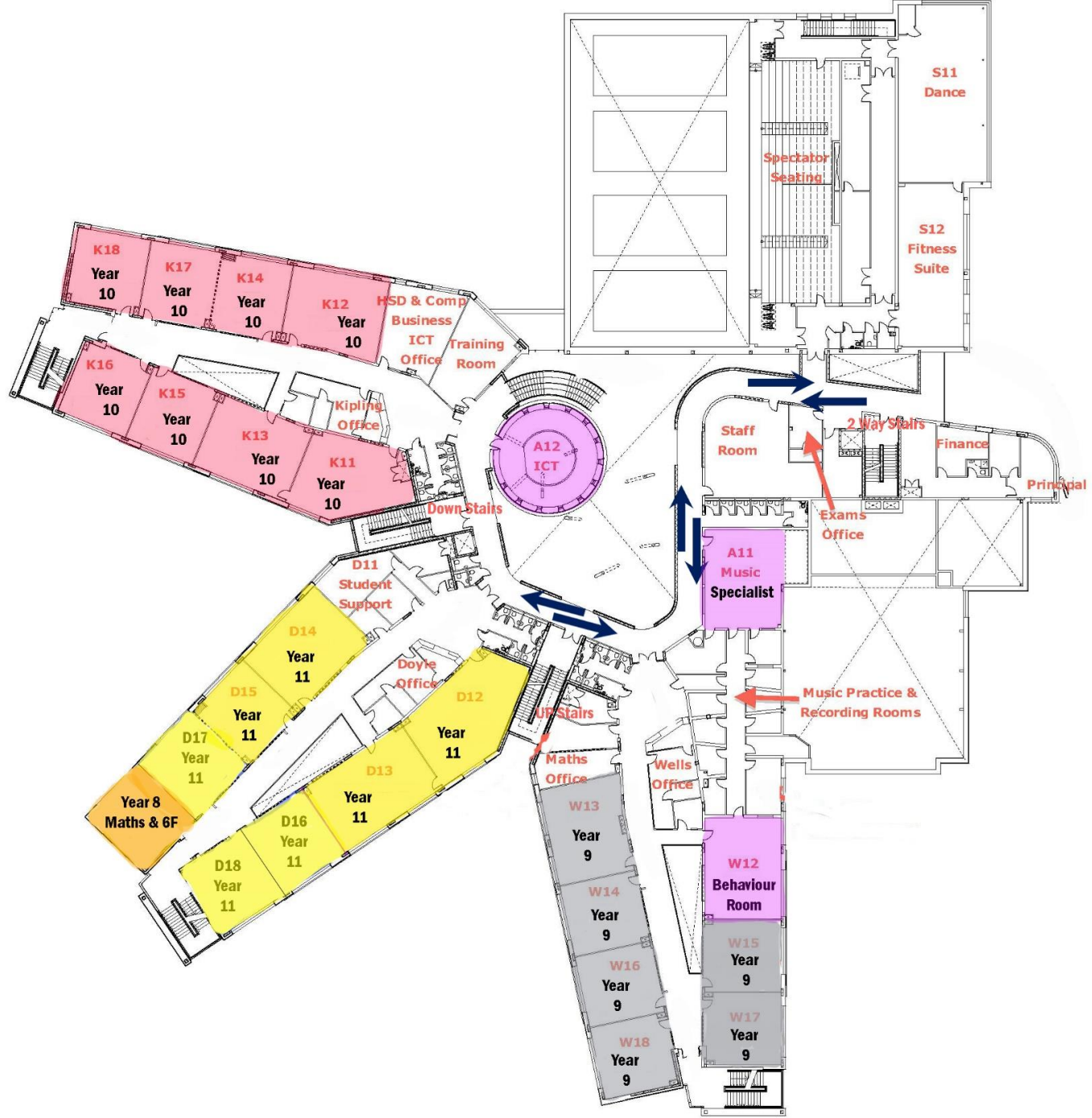
Various depending on
timetable



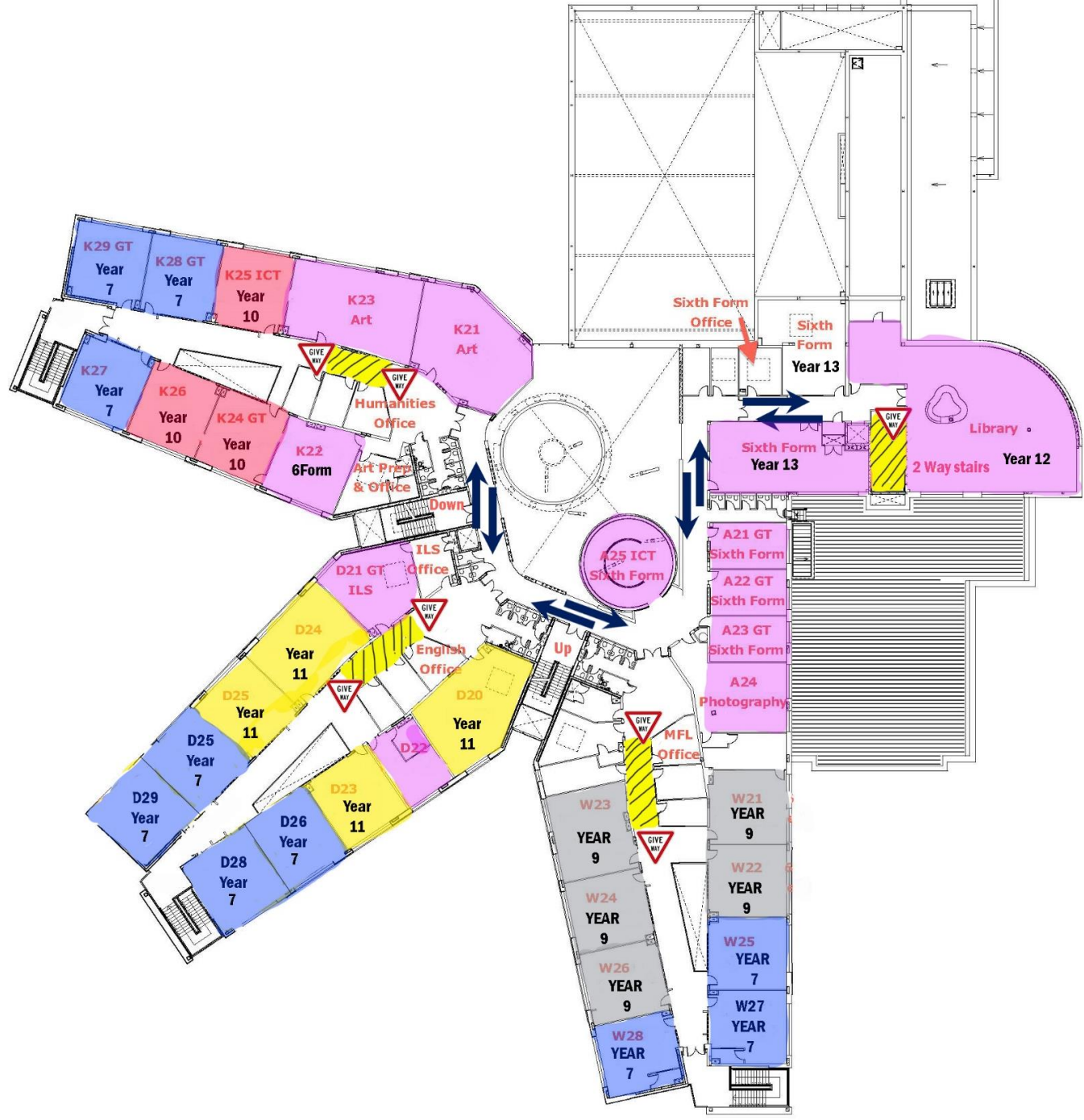
Zoning Ground Floor



Zoning First Floor



Zoning Second Floor



Student Induction

Monday 7th September

- Year 7 – arrival from 8am for 8.30am; induction assembly during P1. Mentor time P2. Timetabled lessons for the rest of the day; to include computer log in sessions
- Year 11 – arrival from 10.30am for 10.50am; induction assembly during P3 followed by 20min mentor time slot. Timetabled lessons P5 and P6.
- Year 13 – induction assembly 9am – 10am only, no lessons (Thursday – start of lessons for Year 13).

Tuesday 8th

- Year 7 and 11 timetabled lessons all day.
- Year 10 – arrival from 8am for 8.30am; induction assembly during P1. Timetabled lessons from P2.
- Year 12 - induction assembly 9am – 10am only, no lessons. Details regarding assembly to follow.

Wednesday 9th

- Year 7, 10 and 11 timetabled lessons all day.
- Year 8 - arrival from 8am for 8.30am; induction assembly during P1. Timetabled lessons from P2.
- Year 12 - induction assembly 9am – 10am only, no lessons (Thursday – lessons start for Year 12).

Thursday 10th

- Year 7, 8, 10, 11, 12, 13 timetabled lessons all day.
- Year 9 - arrival from 8am for 8.30am; induction assembly during P1. Timetabled lessons from P2.

Friday 11th

- Timetabled lessons all day for all year groups.